

YEAR

2015

LINK SOY ST (from SAI YEUNG CHOI ST S to YIM PO FONG ST)

COVERAGE (B) STATION

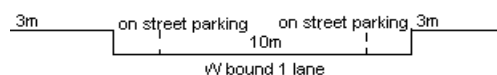
4403

ROAD NETWORK

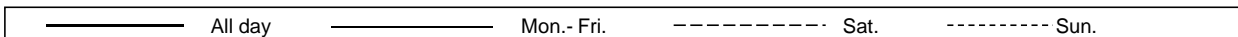
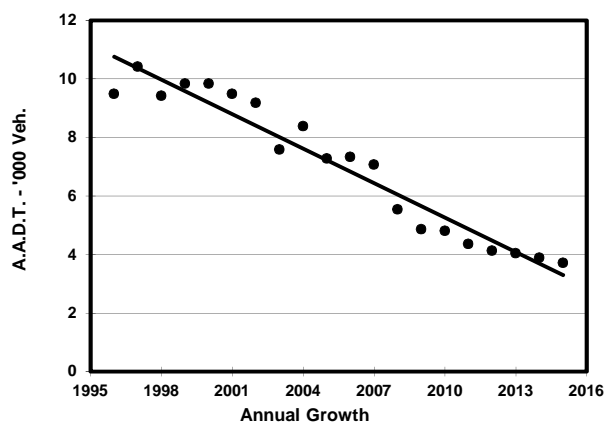
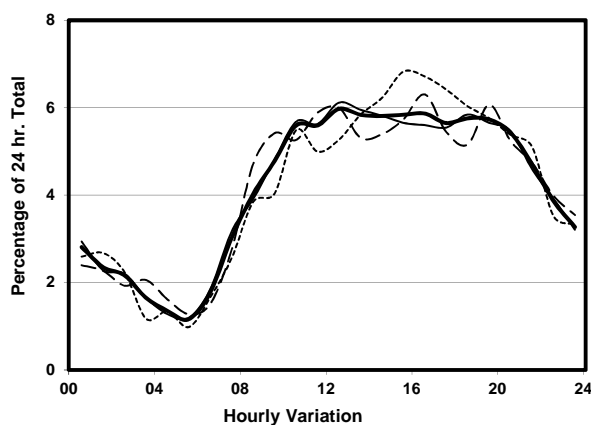
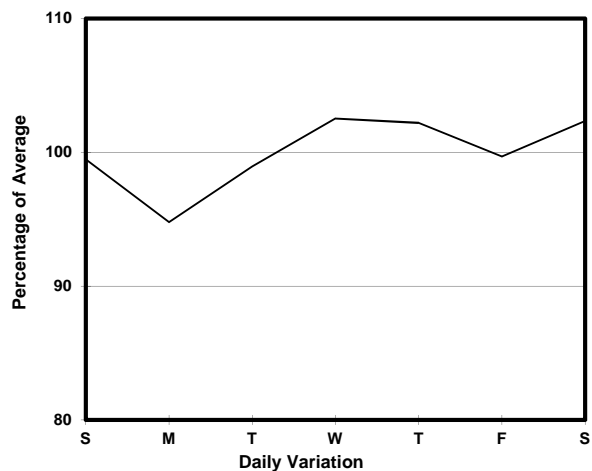
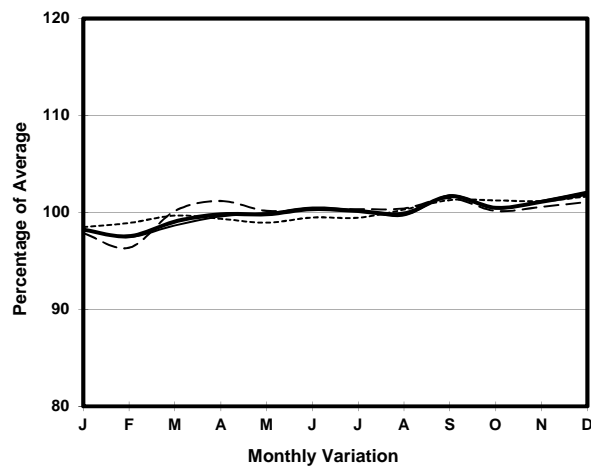
MINOR

ROAD TYPE

LOCAL DISTRIBUTOR



1. TRAFFIC FLOW VARIATION AND GROWTH



2. TRAFFIC CHARACTERISTICS (BY DIRECTION)

Parameter	All - Day	Mon. - Fri.	Sat.	Sun.
WEST BOUND				
A.A.D.T.	3710	3700	3790	3690
R 12 / 24 - %	63.8	63.7	63.4	64.2
R 16 / 24 - %	83.5	83.4	83.4	84
AM Peak Hour	0900-1000	0900-1000	0900-1000	0900-1000
One-way flow at AM peak hour	180	180	210	150
T - % (AM)	-	8.3	-	-
PM Peak Hour	1600-1700	1800-1900	1600-1700	1600-1700
One-way flow at PM peak hour	220	220	240	250
T - % (PM)	-	2.8	-	-
Prop.of commercial vehicles - 16 hr.	-	4.4	-	-
 A.A.D.T.	-	-	-	-
R 12 / 24 - %	-	-	-	-
R 16 / 24 - %	-	-	-	-
AM Peak Hour	-	-	-	-
One-way flow at AM peak hour	-	-	-	-
T - % (AM)	-	-	-	-
PM Peak Hour	-	-	-	-
One-way flow at PM peak hour	-	-	-	-
T - % (PM)	-	-	-	-
Prop.of commercial vehicles - 16 hr.	-	-	-	-

3. OTHER INFORMATION AND COMMENT

4. Vehicle classification and occupancy - Monday to Friday

Time		Class of vehicle									
		Motor	Private	Taxi	Private	PLB	Goods veh.		Non	Fr. Bus	
		Cycle	Car		LB		Light	M & H	Fr. Bus	SD	DD
0700-0800	Pro	3.4	6.9	41.4	0.0	34.5	3.4	3.4	6.9	0.0	0.0
	Ocp	1.0	1.5	1.3	0.0	8.3	1.0	2.0	1.0	0.0	0.0
0800-0900	Pro	0.0	44.0	8.0	4.0	36.0	4.0	0.0	4.0	0.0	0.0
	Ocp	0.0	1.6	1.5	11.0	9.4	1.0	0.0	1.0	0.0	0.0
0900-1000	Pro	2.8	30.6	19.4	2.8	25.0	11.1	0.0	8.3	0.0	0.0
	Ocp	1.0	1.4	1.6	4.0	8.8	2.0	0.0	1.0	0.0	0.0
1000-1100	Pro	6.5	17.4	45.7	0.0	4.3	26.1	0.0	0.0	0.0	0.0
	Ocp	1.3	1.1	1.2	0.0	7.5	1.7	0.0	0.0	0.0	0.0
1100-1200	Pro	5.5	9.1	41.8	0.0	14.5	29.1	0.0	0.0	0.0	0.0
	Ocp	1.3	2.2	1.2	0.0	9.6	1.4	0.0	0.0	0.0	0.0
1200-1300 Peak hour	Pro	2.4	21.4	35.7	0.0	7.1	26.2	4.8	2.4	0.0	0.0
	Ocp	1.0	1.1	1.6	0.0	12.0	1.5	1.5	1.0	0.0	0.0
1300-1400	Pro	3.8	28.3	26.4	0.0	13.2	18.9	3.8	5.7	0.0	0.0
	Ocp	1.0	1.5	1.3	0.0	8.4	1.6	2.5	1.0	0.0	0.0
1400-1500	Pro	4.3	29.8	34.0	0.0	8.5	21.3	0.0	2.1	0.0	0.0
	Ocp	1.0	1.5	1.8	0.0	12.0	1.4	0.0	1.0	0.0	0.0
1500-1600	Pro	11.7	36.7	16.7	0.0	6.7	26.7	0.0	1.7	0.0	0.0
	Ocp	1.0	1.5	1.3	0.0	7.8	1.7	0.0	3.0	0.0	0.0
1600-1700	Pro	2.6	26.3	21.1	0.0	2.6	42.1	0.0	5.3	0.0	0.0
	Ocp	1.0	1.9	1.8	0.0	12.0	1.4	0.0	29.0	0.0	0.0
1700-1800	Pro	16.0	38.0	10.0	0.0	12.0	22.0	2.0	0.0	0.0	0.0
	Ocp	1.1	1.6	2.4	0.0	7.0	2.1	1.0	0.0	0.0	0.0
1800-1900	Pro	2.8	63.9	5.6	0.0	11.1	13.9	0.0	2.8	0.0	0.0
	Ocp	1.0	1.6	2.5	0.0	6.8	1.8	0.0	1.0	0.0	0.0
1900-2000	Pro	4.2	35.4	37.5	0.0	10.4	6.3	0.0	6.3	0.0	0.0
	Ocp	1.0	1.6	2.2	0.0	9.4	2.3	0.0	1.0	0.0	0.0
2000-2100	Pro	7.1	50.0	26.8	0.0	10.7	1.8	0.0	3.6	0.0	0.0
	Ocp	1.0	2.1	1.8	0.0	9.5	2.0	0.0	3.5	0.0	0.0
2100-2200	Pro	7.1	35.7	28.6	0.0	11.9	9.5	0.0	7.1	0.0	0.0
	Ocp	1.3	1.3	2.3	0.0	6.8	1.3	0.0	1.0	0.0	0.0
2200-2300	Pro	12.9	35.5	32.3	0.0	16.1	0.0	0.0	3.2	0.0	0.0
	Ocp	1.8	2.1	1.6	0.0	6.4	0.0	0.0	1.0	0.0	0.0
16 hours	Pro	6.2	31.7	27.4	0.3	12.7	17.4	0.9	3.5	0.0	0.0
	Ocp	1.2	1.6	1.6	7.5	8.7	1.6	1.8	3.6	0.0	0.0

Legend

Pro. Proportion of vehicles in % (Sum may not add up to 100% due to figure rounding)*

Ocp. Average occupancy of vehicles including both driver and passengers*

M&H Medium and Heavy

* All traffic data are collected from combined bounds except for one way traffic